

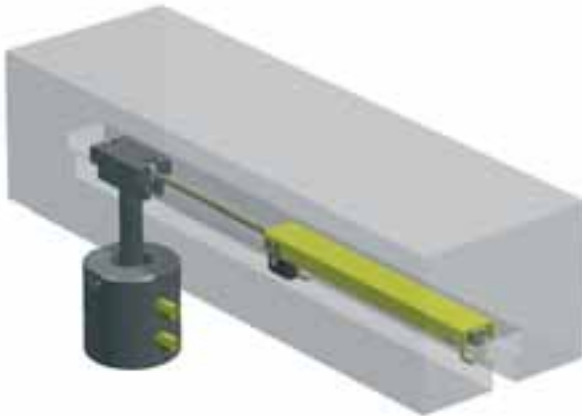
Rapid clamping system with pneumatic cylinder "Pneumatic travelling clamp"



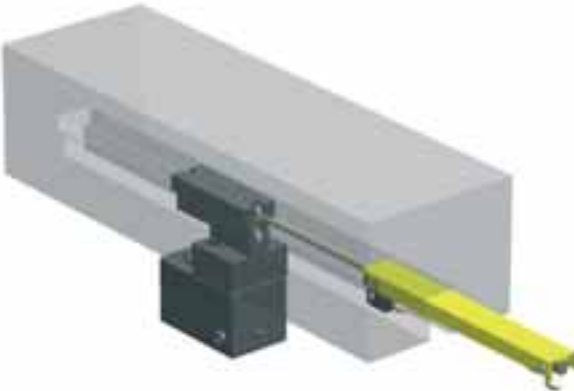
HILMA

Possible clamping elements:

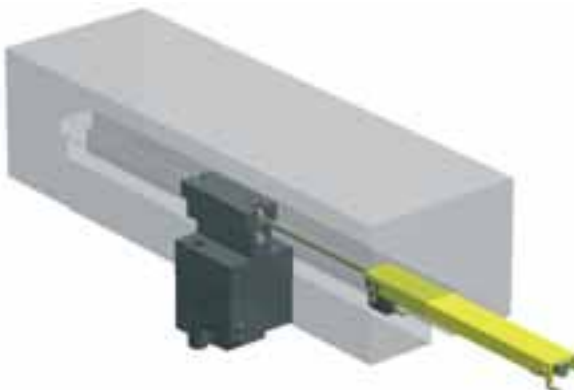
- Hollow piston cylinder double-acting with a max. clamping force of 115 kN
- Hollow piston cylinder single-acting with a max. clamping force of 104 kN
- Locking cylinder double-acting with a max. clamping force of 100 kN
- Spring clamping cylinder, single-acting with a max. clamping force of 100 kN



Sliding clamp single-acting
with a max. clamping force of 78 kN



Angular clamping element single-acting
with a max. clamping force of 66 kN



Application and special features:

Low-cost rapid clamping system for short distances of travel. In this version, standard clamping elements are moved by means of a pneumatic cylinder. The pneumatic positioning drive fits completely into a T-slot as per DIN 650 with a slot width of 28 mm, therefore the positioning cylinder can be positioned 'upstream' or 'downstream' of the clamping element. The positioning drive is fastened in the T-slot using a wedge lock without the need to modify the press ram. Interrogation of the unclamping and clamping positions is carried out using inductive magnetic sensors on the pneumatic cylinder.

- ▶ robust and cost-effective system for short distances of travel
- ▶ easy installation using standard clamping elements
- ▶ for fastening, no modification to the press ram is required
- ▶ rapid adaptation to various die sizes

Scope of supply:

Pneumatic positioning drive unit including screw fittings for pneumatic connection and position interrogation on the cylinder.

Clamping element

High-pressure hose and screw fittings for hydraulic connections on the clamping element

Optional extras:

- ▶ Parking station (for the unclamping position outside of the press ram)
- ▶ Travelling distance up to 400mm
- ▶ Reed contacts instead of inductive magnetic sensors
- ▶ Pneumatic one-way restrictors for adjusting the positioning speed

Other optional extras including adaptation are available upon request

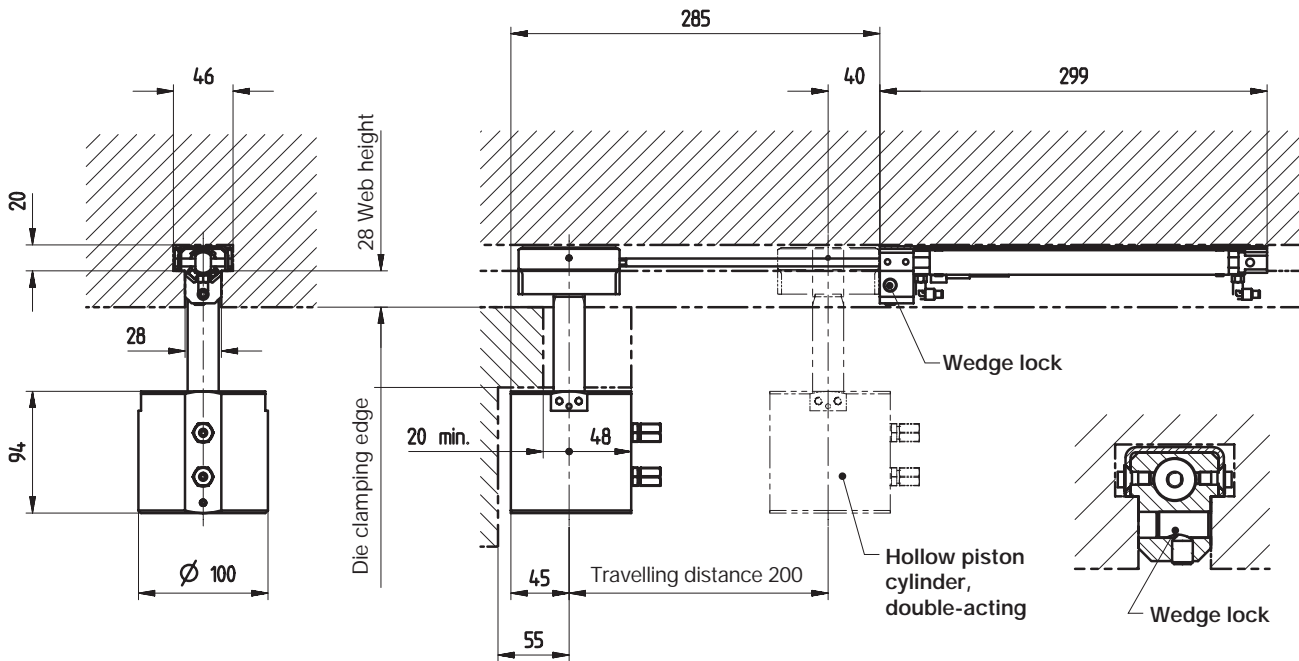
Technical data:

Operating pressure, pneumatic:	min. 6 bar (max. 10 bar)
Weight of the clamping element:	max. 8.5 kg (for 6 bar), 14 kg (for 10 bar)
Travelling distance:	200 mm
Temperature range:	max. 70°C

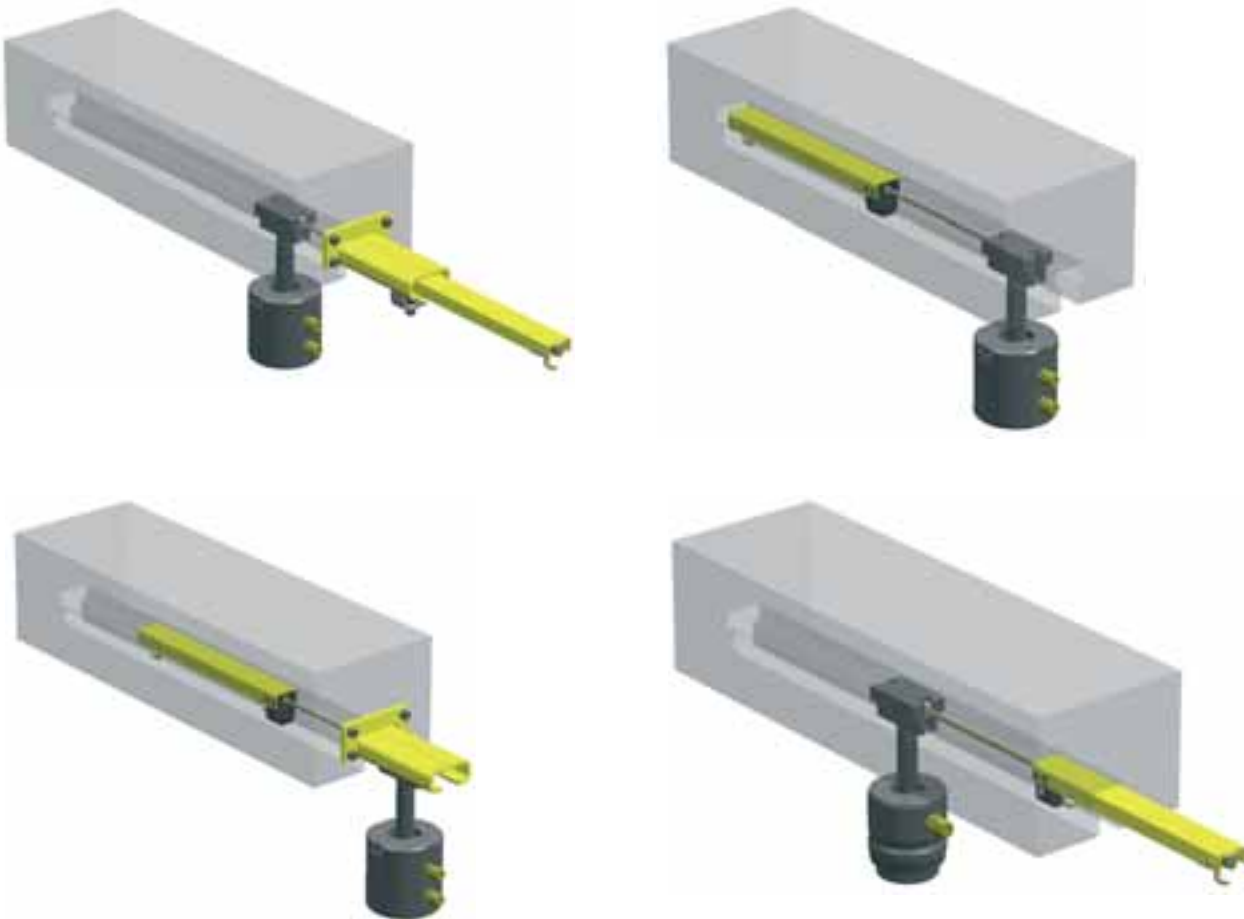


HILMA

Rapid clamping system with pneumatic cylinder "Pneumatic travelling clamp"



Optional extras and versions of installation



3.2295

Hilma-Römheld GmbH

Schützenstraße 74 · D-57271 Hilchenbach

Phone +49 (0) 2733 / 281-0 · Fax +49 (0) 2733 / 281-113 · www.hilma.de

Subject to technical modification